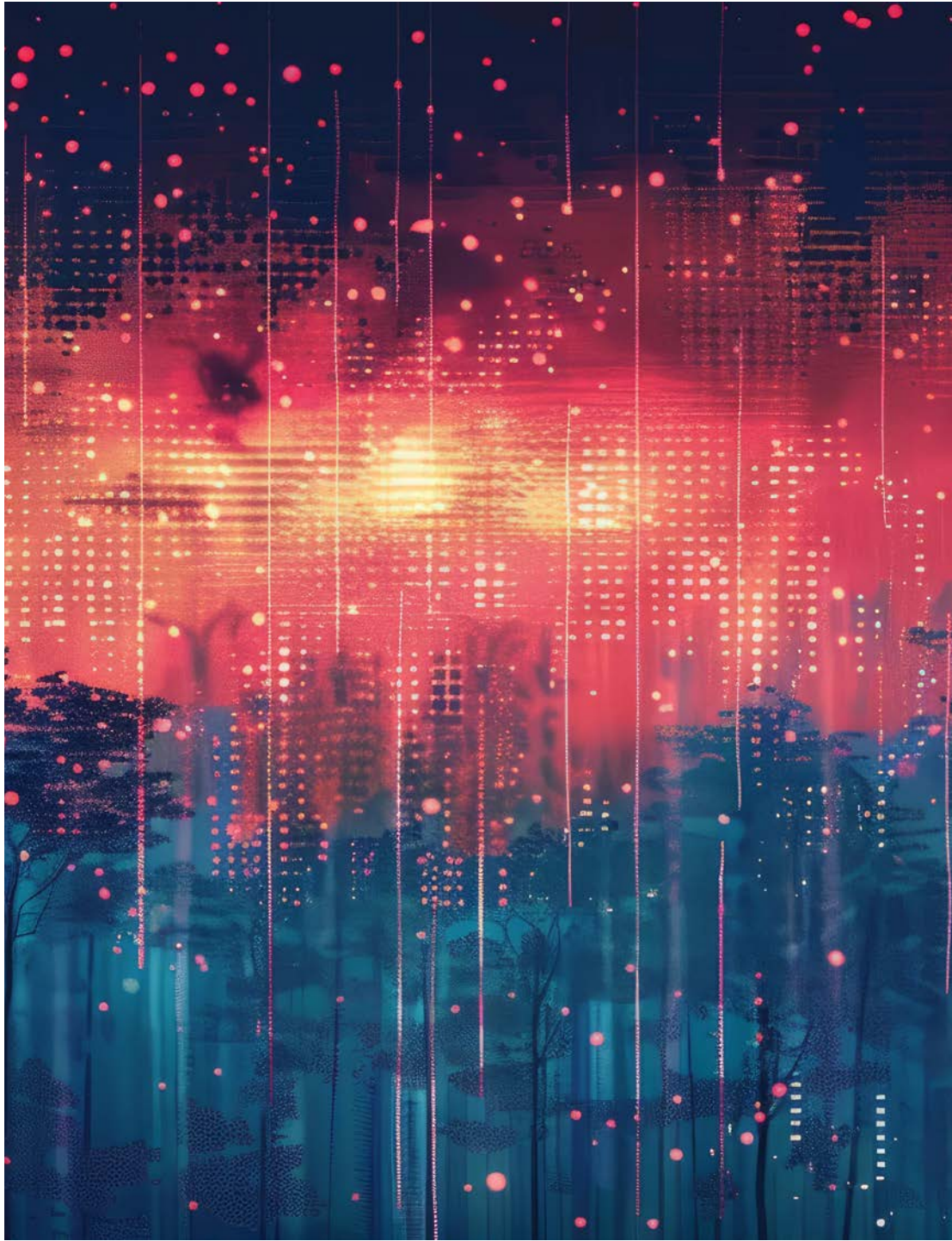


# Intrigue

kinetex



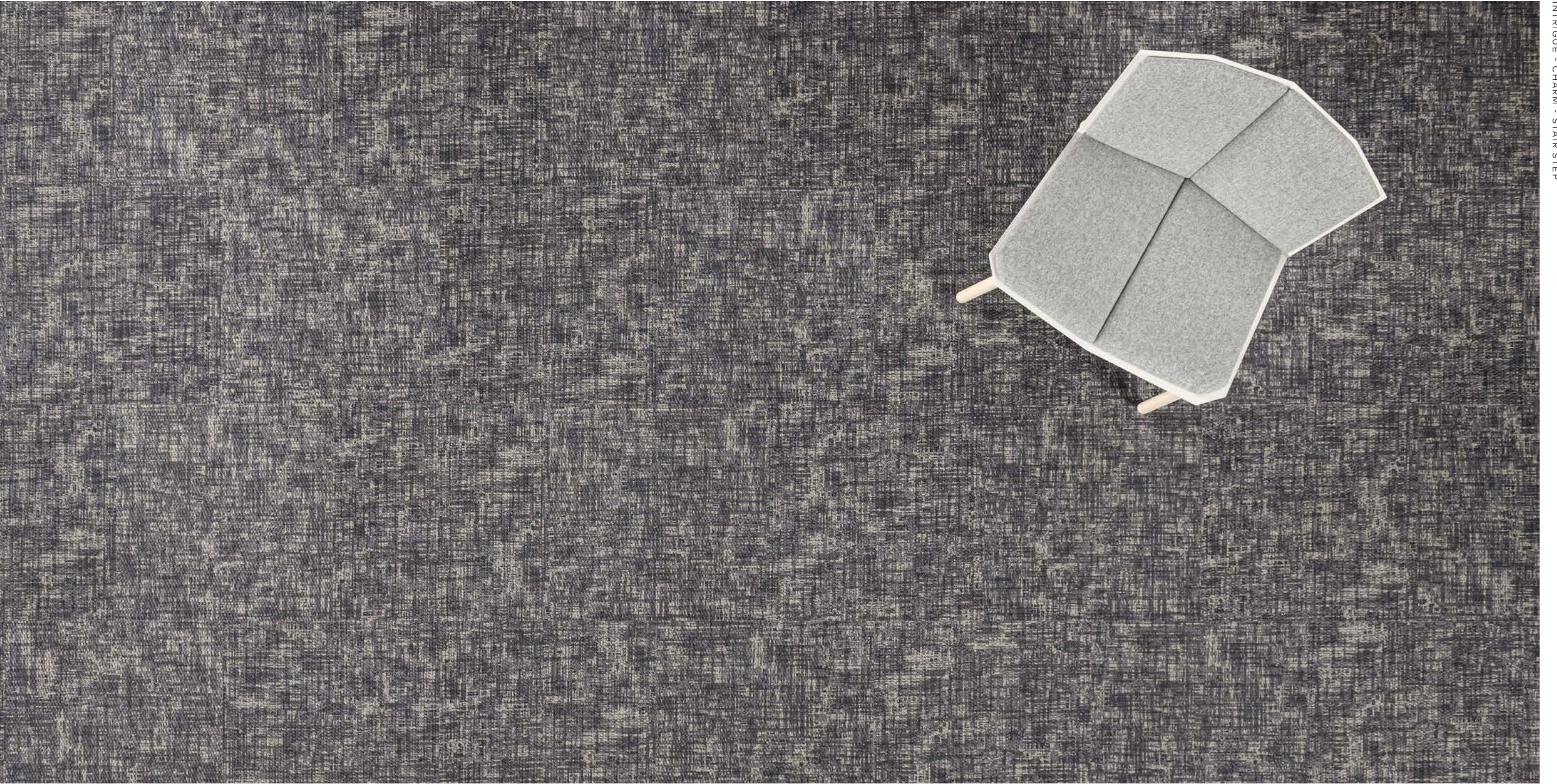




## Intrigue

Boldly visceral. Burst of vibrant color over a muted grid of distress crosshatching: presents as modern with a retro flair, for one-of-a-kind spaces. Mix-and-match with their neutral counterparts to create dynamic interiors, implement workplace redesign, navigate traffic flow, and designate gathering spaces. The palette of 13 dynamic colorways is designed to coordinate with our other EF Contract patterns.

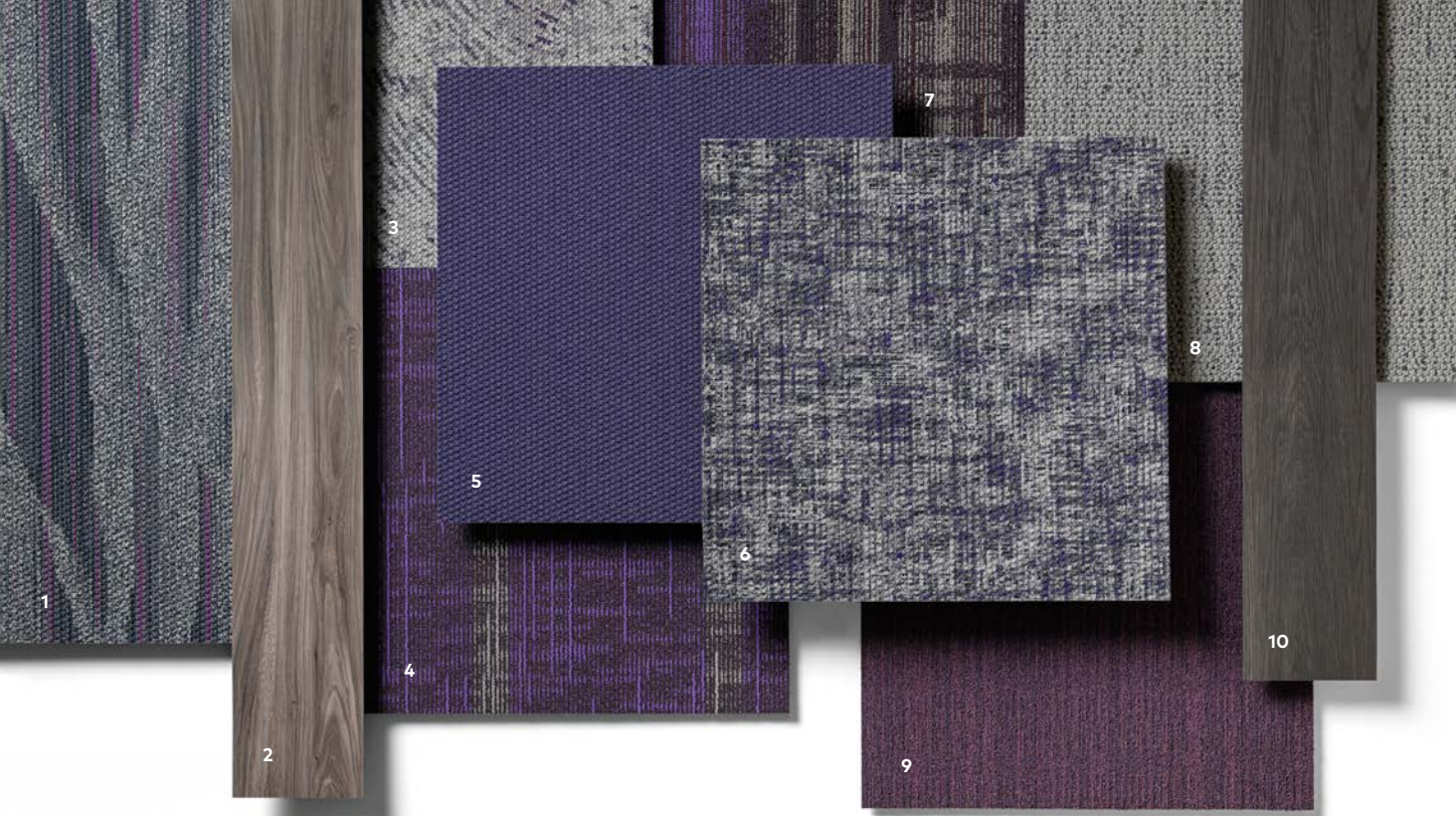












## COORDINATING PALETTE

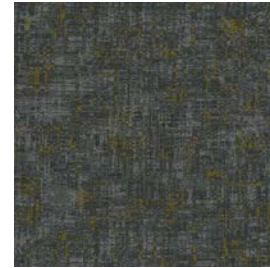
Beyond the beauty of individual products, EF Contract's flooring **coordinate effortlessly** across all of our product platforms - modular carpet tile, broadloom, LVT and Kinetex textile composite flooring. This offering enables you to blend a range of designs to create **palettes** that meet the demands of each unique space.

1	DOUBLE - FLASH	DLE34	KINETEX
2	WOODLANDS II - IRONWOOD	001	LVT
3	CHINOOK - WHIRLWIND	CNK99	KINETEX
4	CONTROL II - VIOLET	CNL96	MODULAR
5	DART - STREAK	DAR99	KINETEX
6	INTRIGUE - TEMPT	ITR95	KINETEX
7	DISTRICT II - DAMSON	DIS97	MODULAR
8	CASCADE - CATARACT	CSC99	KINETEX
9	WATERCOLORS - MARS VIOLET	WTC98	MODULAR
10	PLAYBOOK - SHADOW	010	LVT





# INTRIGUE 24" x 24" MODULAR



ITR25  
CAPTIVATE



ITR17  
CHARM



ITR55  
TRANSFIX



ITR85  
TANTALIZE



ITR12  
ENRAPTURE



ITR15  
FASCINATE



ITR45  
MESMERIZE



ITR65  
DAZZLE



ITR75  
ENTHRALL



ITR47  
ATTRACT



ITR35  
ALLURE



ITR95  
TEMPT



ITR58  
ENCHANT

SCAN ME!

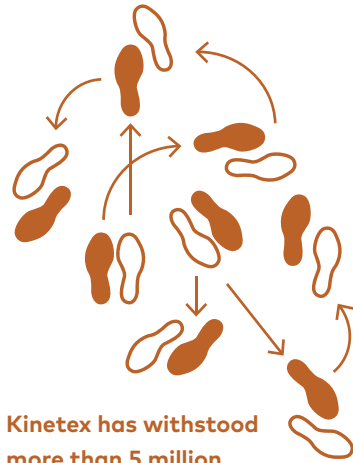


Scan to order samples or check inventory.



1. DURABILITY

Kinetex delivers enduring performance, year after year. One of the most thoroughly tested flooring products on the market, it has outstanding dimensional stability and unparalleled crush resistance.

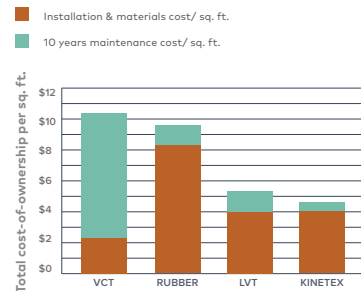


**Kinetex has withstood more than 5 million foot traffic events.**

2. MAINTENANCE

Tough to wear out, easy to maintain. With vacuuming and encapsulation cleaning, Kinetex looks like new, year after year. Thanks to a lightweight face construction, Kinetex retains less water than carpet and dries faster. It is easily sanitized and resists the most challenging staining agents.

**Life Cycle Costs:**  
INSTALLATION AND MAINTENANCE



3. MOISTURE TOLERANCE

The most common subfloor, concrete, can release excessive moisture and destroy floor covering systems—unless costly precautions are taken before installation. But moisture mitigation isn't necessary with Kinetex; its breathable nature allows moisture to pass through its backing, instead of trapping it underneath. Kinetex textile composite flooring will perform in elevated RH slabs up to 100%.

**NO VAPOR BARRIER REQUIRED—**  
regardless if the slab is new or old, regardless of hydrostatic pressure

**100% RH TOLERANCE**

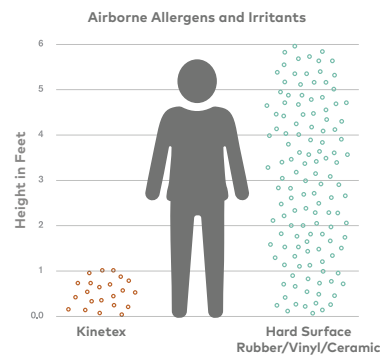
**BREATHABLE**  
No trapped moisture. 3rd party tested and verified.

**Thousands of installations worldwide since 2012. NO MOISTURE-RELATED CLAIMS.**

4. HEALTH

Kinetex minimizes air particulates that trigger allergies and cause infection. It easily surpasses California's 01350 requirements—the most popular U.S. standard for evaluating and restricting VOC emissions indoors.

**Easy Breathing**

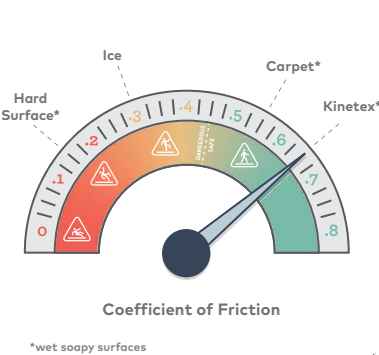


(ESO Fine Test Dust 12103-142) Foot Traffic Dust Emissions Test

5. SAFETY

Kinetex is the only wall-to-wall textile floor covering certified as High-Traction by the National Floor Safety Institute. Its innovative construction creates one of the most slip-resistant flooring surfaces ever tested—wet or dry—to prevent falls before they happen.

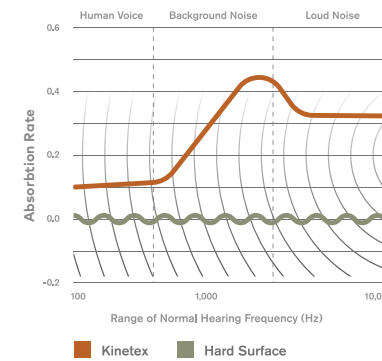
**Gaining Traction**



6. ACOUSTICS

Kinetex delivers unparalleled acoustic performance, with one of the highest Noise Reduction Coefficients (NRC) and Impact Insulation Classifications (IIC) ratings of any commercial flooring product.

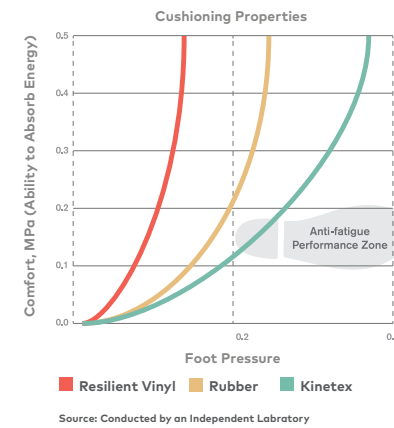
**Keeping Quiet**



7. COMFORT

Kinetex, a soft textile surface with a high-density backing, has exceptional anti-fatigue properties and minimal rolling resistance. Because it can absorb energy, Kinetex has the potential to reduce repetitive foot stress injuries and other injuries related to standing and frequent movement from place to place.

**Step-by-Step Support**



8. SUSTAINABILITY

Made with 45% post-consumer recycled content, each Kinetex tile contains the equivalent of 27 used water bottles. This dematerialized flooring product and its longer life mean that Kinetex has a much smaller environmental footprint than other commercial flooring options. Kinetex is NSF/ANSI-140 Platinum certified (the industry-leading standard for sustainability) and has a Red List Free DECLARE label. Furthermore, Kinetex has been verified as a Carbon Neutral product.

**Second Chances**

**45%** post-consumer content



**Each Kinetex tile contains the equivalent of 27 plastic water bottles.**

**KINETEX INSTALLATION**

Although Kinetex is a modular tile, it does not install like traditional modular carpet. Installers should carefully read the full Kinetex installation instructions. Special attention should be applied until installers gain experience with module placement. Installers should perform site and material conditioning and surface preparation, and there should be no condensation or standing water at the time of installation. Kinetex material is lightweight and is easy to cut, which reduces installation time. Kinetex uses EF Contract's proven adhesive system with a lifetime performance warranty.

**Kinetex Adhesive**

Kinetex Adhesive is formulated for Kinetex textile composite flooring products and is built to bond the textile composite to the properly prepared substrates for the life of the installation. Products with Kinetex Adhesive will perform in elevated RH slabs up to 100%.

Please see the Kinetex installation instructions for full installation details.

## PRODUCT DETAILS

### TECHNOLOGIES

#### High-Def Color Technology™

EF Contract achieves next-generation innovation with the development of High-Def Color Technology. This latest engineering capability provides Kinetex products with crisp color, vibrant patterns and dimensional design that rivals that of soft surface flooring.



### WARRANTIES

We stand behind every aspect of Kinetex and extend certain lifetime warranties. Each warranty is covered for the useful life of the product, provided that installation and maintenance is in accordance with EF Contract's Kinetex Installation instructions.

#### Wear Layer Warranties

Product Performance	Colorfastness to Light & Crocking	Stain Removal	Static Protection
Lifetime	Lifetime	Lifetime	Lifetime

#### Backing Warranties

Protection from Edge Ravel	Protection from Delamination Failure	Dimensional Stability
Lifetime	Lifetime	Lifetime



2024 EF Contract, LLC - This unique design is protected under the U.S. Copyright Act of 1976. Any unauthorized copying or duplication of this design constitutes copyright infringement in violation of federal law. Due to the unique visual characteristics of modular carpets, pattern repeats and pattern run-off seams may appear more noticeable than in broadloom carpets. Such visual characteristics do not constitute a manufacturing defect, and as such, should be considered when selecting modular carpet and its installation.

These photographs are representations of the installation for this modular product. Your modular installation may look different than these photos depending upon individual tile placement, lighting, and overall space layout, including furnishings. Final tile placement and the resulting visual is thus the customer's, and not J+J Flooring's responsibility.

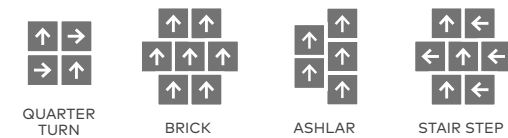
\*NRC rating is a measure of the effectiveness of a material in absorbing sound. The higher the NRC rating, the greater the ability of the flooring product to absorb airborne noise. Independent laboratory testing of Kinetex has shown an average NRC rating of 0.30 (bare concrete flooring will typically provide a NRC Rating of 0.015).

\*\*IIC is a rating of the insulation from impact noise. The higher the IIC rating, the greater the sound insulation. Independent laboratory testing of Kinetex has shown an average IIC Rating of .64 (bare concrete flooring will typically provide an IIC Rating of 34) NOTE: Test results and testing laboratory will vary, and the above information is not guaranteed.

## PRODUCT DETAILS

STYLE	INTRIGUE   ITR
WEAR LAYER	SOLUTION DYED POLYESTER - APPLIED PATTERN (PRODUCED WITH HIGH-DEF COLOR TECHNOLOGY™)
BACKING	POLYESTER FELT CUSHION
TOTAL WEIGHT (NOMINAL AVERAGE)	4.5 OZ - 5.2 OZ / SQUARE FOOT
TOTAL THICKNESS (NOMINAL AVERAGE)	0.205 IN
DIMENSIONS	24" W X 24" L
PACKAGING	18 MODULES PER BOX, 72 SQUARE FEET
CARBON FOOTPRINT	CARBON NEUTRAL
RED LIST FREE	DECLARE LABEL
RECYCLED CONTENT	45% POST-CONSUMER
LEED SCORECARD	IEQ 4.1 AND IEQ 4.3
NSF/ANSI 140 CERTIFICATION	PLATINUM
FLOORING RADIANT PANEL	CLASS 1
SMOKE DENSITY	LESS THAN 450 (FLAMING & NON-FLAMING)
ELECTROSTATIC PROPENSITY	LESS THAN 3.0 KV
COLORFASTNESS TO LIGHT	RATING OF 4.0 OR GREATER
COLORFASTNESS TO CROCKING	RATING OF 4.0 OR GREATER
WATER REPELLENCY	RATING OF 4.0 OR GREATER
APPEARANCE RETENTION	4.0 OR GREATER
SLIP RESISTANCE	COMPLIES WITH ADA GUIDELINES FOR LEVEL SURFACE NFSI CERTIFIED HIGH-TRACTION
THERMAL INSULATION	0.73
NOISE REDUCTION COEFFICIENT	NRC RATING: 0.30*
IMPACT INSULATION CLASSIFICATION	IIC RATING: 64**
STAIN RESISTANCE	RESISTS MOST CHALLENGING STAINS
INDOOR AIR QUALITY CERTIFICATION	CRI GREEN LABEL PLUS™
ADHESIVE	KINETEX ADHESIVE (FULL-SPREAD PRESSURE-SENSITIVE)

### RECOMMENDED INSTALLATION METHODS







PO Box 2207  
Dalton, Georgia 30722  
U.S.A.

800.451.1250  
[efcontract.com](http://efcontract.com)  
AX8023M08