



Installation Methods: Parquet, Herringbone, Basketweave, Brick, Monolithic, Ashlar

Product Specifications

Construction	Patterned Loop
Backing	Nexus® Modular
Dye Method	Solution Dyed
Fiber Type	Encore® SD Ultima® (with recycled content)
Face Weight	16 oz./sy (543 grams/m2)
Pile Density	6558 oz./y3 (243.17 kg/m3)
Pattern Repeat	N/A
Gauge	1/8 (3.15 rows/cm)
Stitches Per Inch	10 stitches/in (3.94 stitches/cm)
Standard Size	18" x 36" approx. (45.72cm x 91.44cm)
Standard Adhesive	Commercialon Premium Modular and LVT Adhesive
Optional Adhesive	TileTabs, Advance Modular Carpet Cushion Adhesive
Standard Warranties	Nexus Modular Commercialon Adhesive for Modular Carpet & LVT Nexus FC Cushion Encore SD Ultima Fiber
Optional Warranties	Advance Modular Backing Nexus Cushion Modular Adhesive Advance Modular Adhesive Encore® 100 Fiber

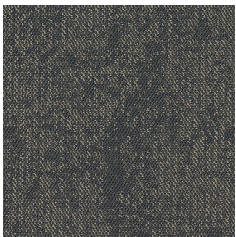
Special Technologies

ProSept® Antimicrobial	Optional
ProTex® Soil Release	Standard
Sentir® Odor-Blocker	Optional

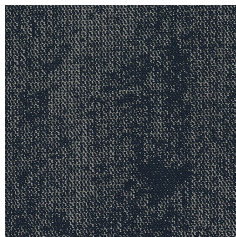
Environmental Specifications & Tests

NSF 140:	Gold Certified
Total Recycled Content	46.2%
Radiant Panel	Class 1
Smoke Density	Less than 450 flaming (ASTM E 662)
Static Test	Less than 3 kv (AATCC-134)
ADA Compliance	Compliant For Accessible Routes
Pill Test	Yes
Lightfastness	Yes

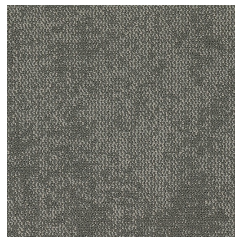
Colorways



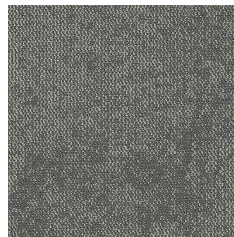
VIP45 Personality



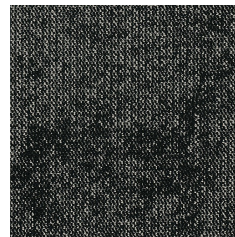
VIP49 Figure



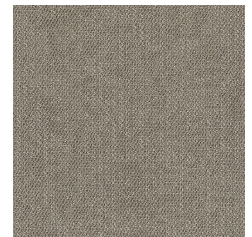
VIP51 Superstar



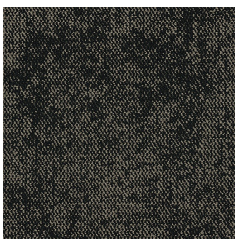
VIP54 Luxurious



VIP59 Celebrity



VIP72 Important



VIP78 Famous