



Installation Methods: Parquet, Herringbone, Basketweave, Ashlar

Product Specifications

Construction	Textured Loop
Backing	Nexus® Modular
Dye Method	Solution / Yarn Dyed
Fiber Type	Encore® BCF (with recycled content)
Face Weight	22 oz./sqy (746 grams/m2)
Pile Density	6439 oz./y3 (238.76 kg/m3)
Pattern Repeat	N/A
Gauge	1/12 (4.72 rows/cm)
Stitches Per Inch	12 stitches/in (4.72 stitches/cm)
Standard Size	12" x 48" approx. (30.48cm x 121.92cm)
Standard Adhesive	Commercialon Premium Modular and LVT Adhesive
Optional Adhesive	TileTabs
Standard Warranties	Nexus Modular Commercialon Adhesive for Modular Carpet & LVT Encore BCF (with ColorLoc Plus) Nexus FC Cushion
Optional Warranties	Commercialon High Moisture Adhesive for Modular Carpet and LVT Advance Modular Backing Nexus Cushion Modular Adhesive Advance Modular Adhesive Tile Tabs Encore® 100 Fiber

Special Technologies

ColorLoc® Plus	Standard
ProSept® Antimicrobial	Optional
ProTex® Soil Release	Standard
Sentir® Odor-Blocker	Optional

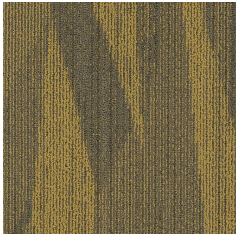
Environmental Specifications & Tests

NSF 140:	Gold Certified
Total Recycled Content	44.2%
Radiant Panel	Class 1
Smoke Density	Less than 450 flaming (ASTM E 662)
Static Test	Less than 3 kv (AATCC-134)
ADA Compliance	Compliant For Accessible Routes
Pill Test	Yes
Lightfastness	Yes

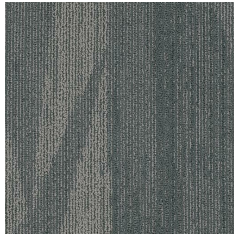
Colorways



TCK12 Rice Paper



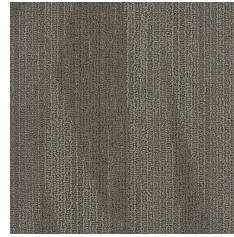
TCK23 Construction...



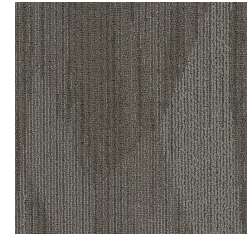
TCK45 Cellophane



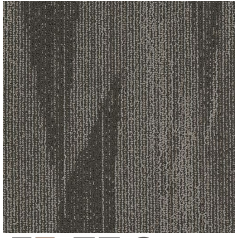
TCK49 Ditto Paper



TCK54 Vellum



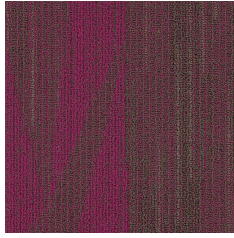
TCK55 Tracing Pap..



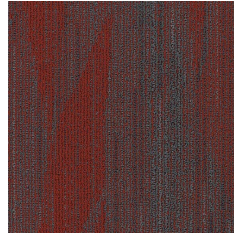
TCK58 Newspaper



TCK59 Carbon Pap...



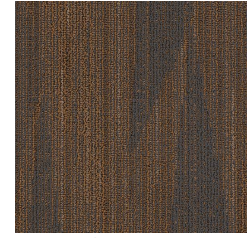
TCK66 Crepe Paper



TCK68 Wrapping P..



TCK76 Butcher Pa..



TCK77 Card Stock