



Installation Methods: Parquet, Herringbone, Basketweave, Ashlar

Product Specifications

Construction	Tip-Sheared Scroll
Backing	Nexus® Modular
Dye Method	Solution Dyed
Fiber Type	Encore® SD Ultima® (with recycled content)
Face Weight	22 oz./sy (746 grams/m2)
Pile Density	6387 oz./y3 (236.83 kg/m3)
Pattern Repeat	N/A
Gauge	1/12 (4.72 rows/cm)
Stitches Per Inch	10.83 stitches/in (4.26 stitches/cm)
Standard Size	12" x 48" approx. (30.48cm x 121.92cm)
Standard Adhesive	Commercialon Premium Modular and LVT Adhesive
Standard Warranties	Nexus Modular Commercialon Adhesive for Modular Carpet & LVT Nexus FC Cushion Encore SD Ultima Fiber
Optional Warranties	Commercialon High Moisture Adhesive for Modular Carpet and LVT Advance Modular Backing Nexus Cushion Modular Adhesive Advance Modular Adhesive Encore® 100 Fiber

Special Technologies

ProSept® Antimicrobial	Optional
ProTex® Soil Release	Standard
Sentir® Odor-Blocker	Optional

Environmental Specifications & Tests

NSF 140:	Gold Certified
Total Recycled Content	44.8%
Radiant Panel	Class 1
Smoke Density	Less than 450 flaming (ASTM E 662)
Static Test	Less than 3 kv (AATCC-134)
ADA Compliance	Compliant For Accessible Routes
Pill Test	Yes
Lightfastness	Yes

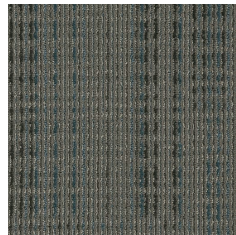
Colorways



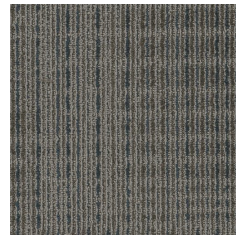
STT10 Tatami



STT32 Tinsel



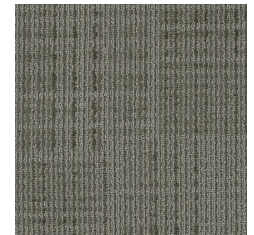
STT45 Shadow



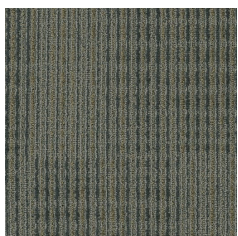
STT47 Barkcloth



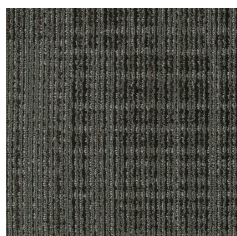
STT48 Denim



STT52 Grey Twill



STT55 Stonewash



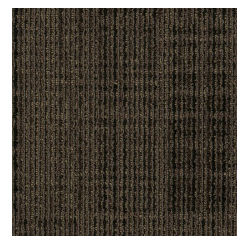
STT58 Rattan



STT72 Knitting Nee...



STT76 Corduroy



STT77 Tapestry Ta...



STT86 Shuttle Bro...