



Installation Methods: Herringbone, Brick, Ashlar

## Product Specifications

Construction	Patterned Scroll
Backing	Nexus® Modular
Dye Method	Solution Dyed
Fiber Type	Encore® SD Ultima® (with recycled content)
Face Weight	24 oz./sy (814 grams/m2)
Pile Density	8471 oz./y3 (314.11 kg/m3)
Pattern Repeat	N/A
Gauge	1/12 (4.72 rows/cm)
Stitches Per Inch	10.6 stitches/in (4.17 stitches/cm)
Standard Size	18" x 36" approx. (45.72cm x 91.44cm)
Standard Adhesive	Commercialon Premium Modular and LVT Adhesive
Optional Adhesive	TileTabs
Standard Warranties	Nexus Modular Commercialon Adhesive for Modular Carpet & LVT Nexus FC Cushion Encore SD Ultima Fiber
Optional Warranties	Commercialon High Moisture Adhesive for Modular Carpet and LVT Advance Modular Backing Nexus Cushion Modular Adhesive Advance Modular Adhesive Tile Tabs Encore® 100 Fiber

## Special Technologies

ProSept® Antimicrobial	Optional
ProTex® Soil Release	Standard
Sentir® Odor-Blocker	Optional

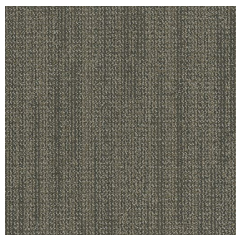
## Environmental Specifications & Tests

NSF 140:	Gold Certified
Total Recycled Content	44.4%
Radiant Panel	Class 1
Smoke Density	Less than 450 flaming (ASTM E 662)
Static Test	Less than 3 kv (AATCC-134)
ADA Compliance	Compliant For Accessible Routes
Pill Test	Yes
Lightfastness	Yes

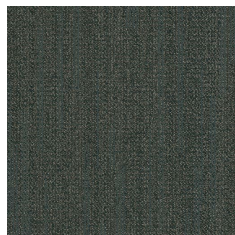
## Colorways



SPW12 Linen Reed



SPW13 Khaki Weft



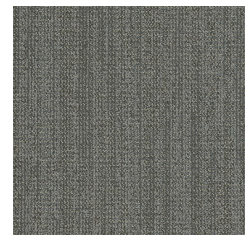
SPW38 Alpine Loo...



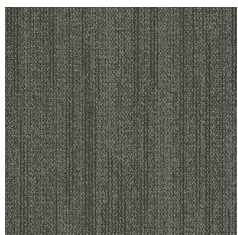
SPW44 Blue Tread...



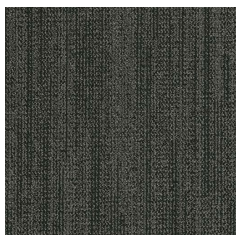
SPW49 Midnight B...



SPW53 Silver Warp



SPW55 Grey Bobbin



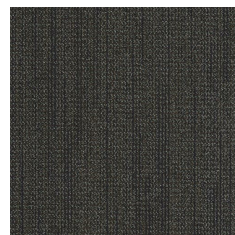
SPW58 Black Selv...



SPW76 Wildwood ...



SPW77 Graphite He...



SPW98 Currant Shu...