



Installation Methods: Brick, Ashlar, Quarter Turn

Product Specifications

Construction	Patterned Scroll
Backing	Nexus® Modular
Dye Method	Solution Dyed
Fiber Type	TeraPlex® SD PET
Face Weight	16 oz./sy (543 grams/m2)
Pile Density	6261 oz./y3 (232.16 kg/m3)
Pattern Repeat	N/A
Gauge	1/8 (3.15 rows/cm)
Stitches Per Inch	11.58 stitches/in (4.56 stitches/cm)
Standard Size	24" x 24" approx. (60.96cm x 60.96cm)
Standard Adhesive	Commercialon Premium Modular and LVT Adhesive
Optional Adhesive	TileTabs
Standard Warranties	Nexus Modular Commercialon Adhesive for Modular Carpet & LVT Nexus FC Cushion
Optional Warranties	Commercialon High Moisture Adhesive for Modular Carpet and LVT Tile Tabs

Special Technologies

ProSept® Antimicrobial	Optional
ProTex® Soil Release	Standard
Sentir® Odor-Blocker	Optional

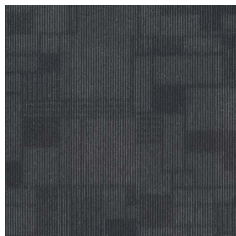
Environmental Specifications & Tests

NSF 140:	Gold Certified
Total Recycled Content	42.95%
Radiant Panel	Class 1
Smoke Density	Less than 450 flaming (ASTM E 662)
Static Test	Less than 3 kv (AATCC-134)
ADA Compliance	Compliant For Accessible Routes
Pill Test	Yes
Lightfastness	Yes

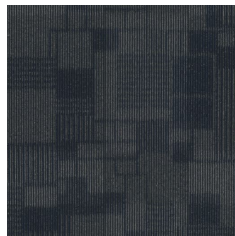
Colorways



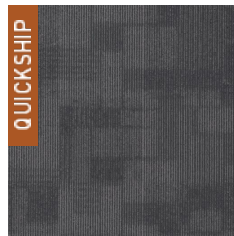
SIG14 Tan



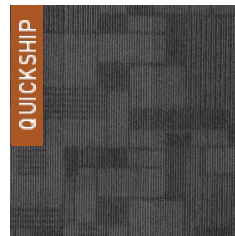
SIG47 Tungsten



SIG48 Navy Blue



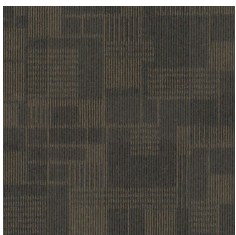
SIG50 Slate



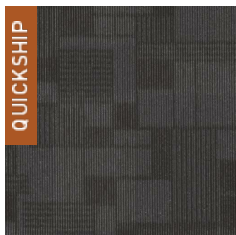
SIG52 Ash



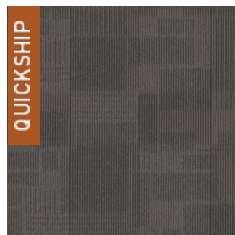
SIG54 Jet



SIG56 Honey Grey



SIG58 Dark Shadow



SIG74 Khaki