



Product Specifications

|                     |   |
|---------------------|---|
| Construction        | Textured Loop                                 |
| Backing             | PremierBac® Plus (A)                          |
| Dye Method          | Solution Dyed                                 |
| Fiber Type          | Encore® SD Ultima® (with recycled content)    |
| Face Weight         | 22 oz./sy (746 grams/m2)                      |
| Pattern Repeat      | .60" (w) x .87" (l) approx. (1.52cm x 2.21cm) |
| Gauge               | 1/10 (3.94 rows/cm)                           |
| Standard Width      | 12 ft 3.66 m                                  |
| Standard Adhesive   | Commercialon Premium Carpet Adhesive          |
| Standard Warranties | <b>Encore SD Ultima Fiber</b>                 |
| Optional Warranties | <b>Encore® 100 Fiber</b>                      |

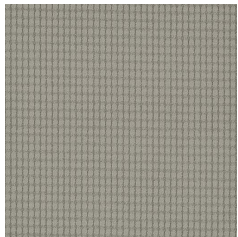
Special Technologies

|                        |          |
|------------------------|----------|
| ProSept® Antimicrobial | Optional |
| ProTex® Soil Release   | Standard |
| Sentir® Odor-Blocker   | Optional |

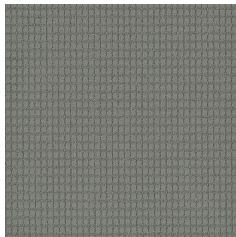
Environmental Specifications & Tests

|                        |                                    |
|------------------------|------------------------------------|
| NSF 140:               | Gold Certified                     |
| Total Recycled Content | 68.9%                              |
| Radiant Panel          | Class 1                            |
| Smoke Density          | Less than 450 flaming (ASTM E 662) |
| Static Test            | Less than 3 kv (AATCC-134)         |
| ADA Compliance         | Compliant For Accessible Routes    |
| Pill Test              | Yes                                |
| Lightfastness          | Yes                                |

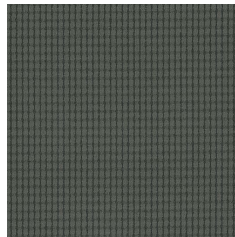
Colorways



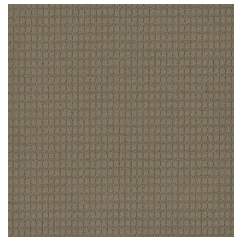
SDG52 Snow-In-S...



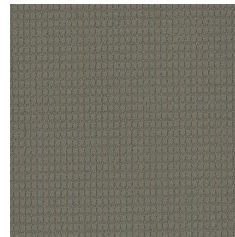
SDG54 Armeria



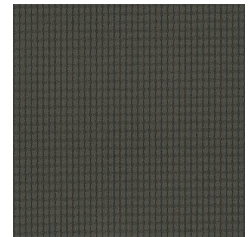
SDG58 Leadplant



SDG72 Straw



SDG74 Woodruff



SDG78 Tarragon