



Installation Methods: Parquet, Herringbone, Basketweave, Ashlar

Product Specifications

Construction	Textured Loop
Backing	Nexus® Modular
Dye Method	Solution / Yarn Dyed
Fiber Type	Encore® BCF (with recycled content)
Face Weight	22 oz./sqy (746 grams/m2)
Pile Density	6439 oz./y3 (238.76 kg/m3)
Pattern Repeat	N/A
Gauge	1/12 (4.72 rows/cm)
Stitches Per Inch	12 stitches/in (4.72 stitches/cm)
Standard Size	12" x 48" approx. (30.48cm x 121.92cm)
Standard Adhesive	Commercialon Premium Modular and LVT Adhesive
Optional Adhesive	TileTabs
Standard Warranties	Nexus Modular Commercialon Adhesive for Modular Carpet & LVT Encore BCF (with ColorLoc Plus) Nexus FC Cushion
Optional Warranties	Commercialon High Moisture Adhesive for Modular Carpet and LVT Advance Modular Backing Nexus Cushion Modular Adhesive Tile Tabs Encore® 100 Fiber

Special Technologies

ColorLoc® Plus	Standard
ProSept® Antimicrobial	Optional
ProTex® Soil Release	Standard
Sentir® Odor-Blocker	Optional

Environmental Specifications & Tests

NSF 140:	Gold Certified
Total Recycled Content	44.2%
Radiant Panel	Class 1
Smoke Density	Less then 450 flaming (ASTM E 662)
Static Test	Less then 3 kv (AATCC-134)
ADA Compliance	Compliant For Accessible Routes
Pill Test	Yes
Lightfastness	Yes

Colorways



PLE12 Rice Paper



PLE23 Construction...



PLE45 Cellophane



PLE49 Ditto Paper



PLE54 Vellum



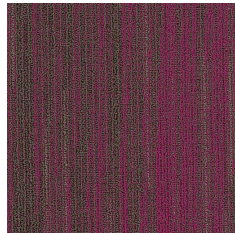
PLE55 Tracing Pap..



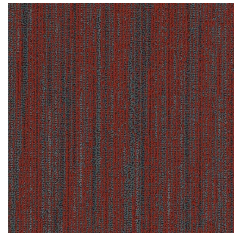
PLE58 Newsprint



PLE59 Carbon Pap...



PLE66 Crepe Paper



PLE68 Wrapping P..



PLE76 Butcher Pa..



PLE77 Card Stock