



Installation Methods: Parquet, Herringbone, Basketweave, Ashlar

Product Specifications

Construction	Tip Sheared Loop Pattern
Backing	Nexus® Modular
Dye Method	Solution Dyed
Fiber Type	Encore® SD Ultima® (with recycled content)
Face Weight	24 oz./sy (814 grams/m2)
Pile Density	12000 oz./y3 (444.97 kg/m3)
Pattern Repeat	N/A
Gauge	1/12 (4.72 rows/cm)
Standard Size	18" x 36" approx. (45.72cm x 91.44cm)
Standard Adhesive	Commercialon Premium Modular and LVT Adhesive
Optional Adhesive	TileTabs
Standard Warranties	Nexus Modular Commercialon Adhesive for Modular Carpet & LVT Nexus FC Cushion Encore SD Ultima Fiber
Optional Warranties	Commercialon High Moisture Adhesive for Modular Carpet and LVT Advance Modular Backing Nexus Cushion Modular Adhesive Tile Tabs Encore® 100 Fiber

Special Technologies

ProSept® Antimicrobial	Optional
ProTex® Soil Release	Standard
Sentir® Odor-Blocker	Optional

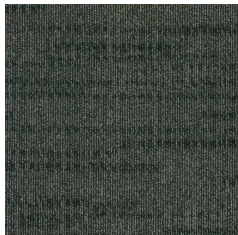
Environmental Specifications & Tests

NSF 140:	Gold Certified
Total Recycled Content	44.4%
Radiant Panel	Class 1
Smoke Density	Less than 450 flaming (ASTM E 662)
Static Test	Less than 3 kv (AATCC-134)
ADA Compliance	Compliant For Accessible Routes
Pill Test	Yes
Lightfastness	Yes

Colorways



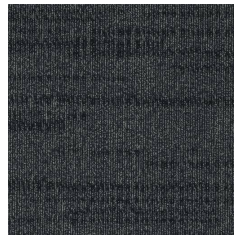
KAS24 Husk



KAS36 Midori



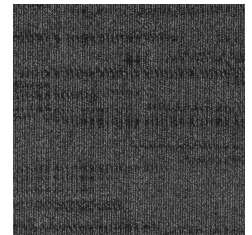
KAS46 Woad



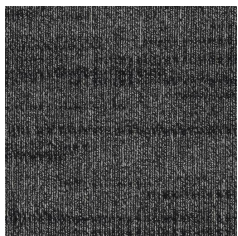
KAS48 Kon



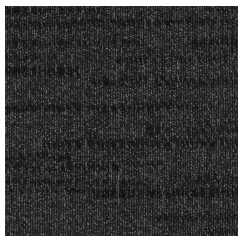
KAS52 Mist



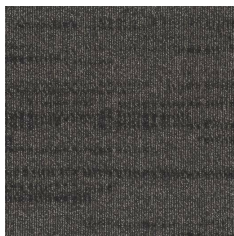
KAS54 Ferrous



KAS56 Kuro



KAS58 Soot



KAS76 Buckthorn