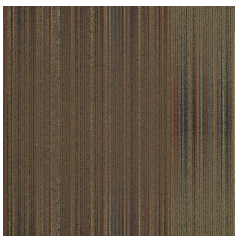


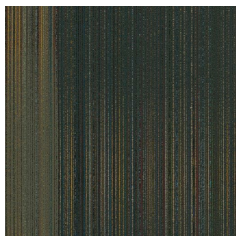


Installation Methods: Monolithic, Quarter Turn

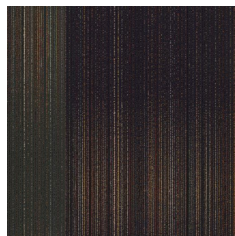
Colorways



IMX12 In Tandem



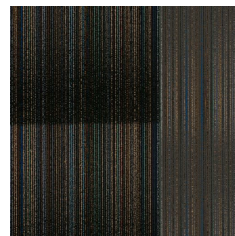
IMX36 Synthesis



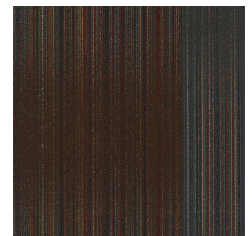
IMX47 So Surreal



IMX57 Blend



IMX59 Fade To Bla...



IMX79 Close Proxim..

Product Specifications

Construction	Textured Loop
Backing	Nexus® Modular
Dye Method	Solution Dyed
Fiber Type	Encore® RE Nylon (recycled content)
Face Weight	20 oz./sy (678 grams/m2)
Pile Density	10286 oz./y3 (381.41 kg/m3)
Pattern Repeat	N/A
Gauge	1/10 (3.94 rows/cm)
Stitches Per Inch	11 stitches/in (4.33 stitches/cm)
Standard Size	24" x 24" approx. (60.96cm x 60.96cm)
Standard Adhesive	Commercialon Premium Modular and LVT Adhesive
Standard Warranties	Nexus Modular Commercialon Adhesive for Modular Carpet & LVT Nexus FC Cushion
Optional Warranties	Commercialon High Moisture Adhesive for Modular Carpet and LVT

Special Technologies

ProSept® Antimicrobial	Optional
ProTex® Soil Release	Standard
Sentir® Odor-Blocker	Optional

Environmental Specifications & Tests

NSF 140:	Gold Certified
Total Recycled Content	56.3%
Radiant Panel	Class 1
Smoke Density	Less than 450 flaming (ASTM E 662)
Static Test	Less than 3 kv (AATCC-134)
ADA Compliance	Compliant For Accessible Routes
Pill Test	Yes
Lightfastness	Yes