



Installation Methods: Parquet, Herringbone, Basketweave, Ashlar

Product Specifications

Construction	Patterned Loop
Backing	Nexus® Modular
Dye Method	Solution Dyed
Fiber Type	TeraPlex® SD PET
Face Weight	19 oz./sy (644 grams/m2)
Pile Density	5897 oz./y3 (218.66 kg/m3)
Pattern Repeat	N/A
Gauge	1/12 (4.72 rows/cm)
Standard Size	18" x 36" approx. (45.72cm x 91.44cm)
Standard Adhesive	Commercialon Premium Modular and LVT Adhesive
Optional Adhesive	TileTabs
Standard Warranties	Nexus Modular Commercialon Adhesive for Modular Carpet & LVT Nexus FC Cushion
Optional Warranties	Commercialon High Moisture Adhesive for Modular Carpet and LVT Advance Modular Backing Tile Tabs

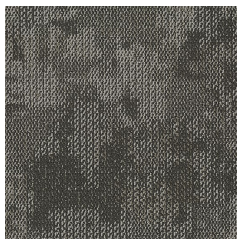
Special Technologies

ProSept® Antimicrobial	Optional
ProTex® Soil Release	Standard
Sentir® Odor-Blocker	Optional

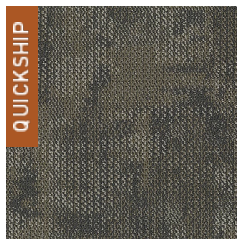
Environmental Specifications & Tests

NSF 140:	Gold Certified
Total Recycled Content	40.1%
Radiant Panel	Class 1
Smoke Density	Less than 450 flaming (ASTM E 662)
Static Test	Less than 3 kv (AATCC-134)
ADA Compliance	Compliant For Accessible Routes
Pill Test	Yes
Lightfastness	Yes

Colorways



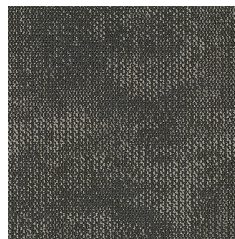
INT10 Commutable



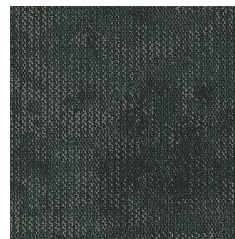
INT12 Capable



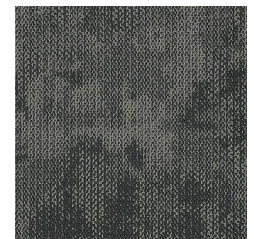
INT15 Similar



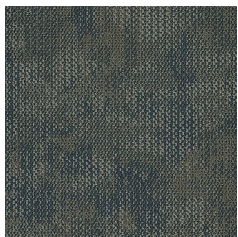
INT16 Replaceable



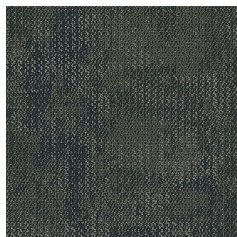
INT33 Exchange



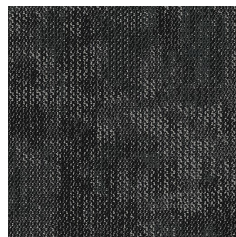
INT40 Switchable



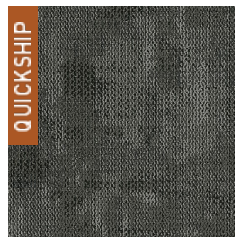
INT43 Alteration



INT46 Additionally



INT56 Function



INT58 Standardized