



## Product Specifications

Construction	Tip Sheared Loop Pattern
Backing	PremierBac® Plus (A)
Dye Method	Solution Dyed
Fiber Type	Encore® SD Ultima® (with recycled content)
Face Weight	24 oz./sy (814 grams/m2)
Pile Density	6803 oz./y3 (252.26 kg/m3)
Pattern Repeat	24.00" (w) x .54" (l) approx. (60.96cm x 1.37cm)
Gauge	1/10 (3.94 rows/cm)
Standard Width	12 ft 3.66 m
Standard Adhesive	Commercialon Premium Carpet Adhesive
Standard Warranties	Encore SD Ultima Fiber
Optional Warranties	Endure Plus TitanBac Plus Encore® 100 Fiber

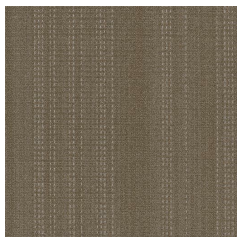
## Special Technologies

ProSept® Antimicrobial	Optional
ProTex® Soil Release	Standard
Sentir® Odor-Blocker	Optional

## Environmental Specifications &amp; Tests

NSF 140:	Gold Certified
Total Recycled Content	33.65%
Radiant Panel	Class 1
Smoke Density	Less than 450 flaming (ASTM E 662)
Static Test	Less than 3 kv (AATCC-134)
ADA Compliance	Compliant For Accessible Routes
Pill Test	Yes
Lightfastness	Yes

## Colorways



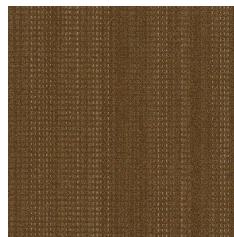
IMM13 Driftwood



IMM23 Ochre



IMM24 Canary



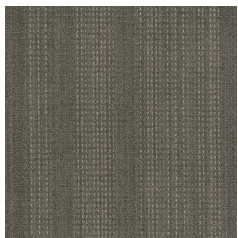
IMM26 Sepia



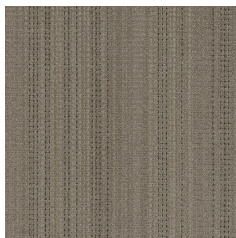
IMM44 Luminol



IMM45 Squid



IMM53 Quarry



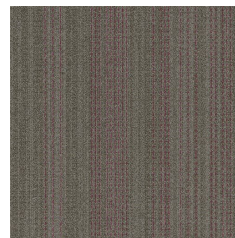
IMM54 Charred



IMM77 Rooted



IMM84 Matador



IMM94 Concord