



Installation Methods: Brick, Monolithic, Ashlar, Quarter Turn

Product Specifications

Construction	Patterned Scroll
Backing	Nexus® Modular
Dye Method	Solution Dyed
Fiber Type	Encore® SD Ultima® (with recycled content)
Face Weight	15 oz./sy (509 grams/m2)
Pile Density	8852 oz./y3 (328.24 kg/m3)
Pattern Repeat	N/A
Gauge	1/12 (4.72 rows/cm)
Stitches Per Inch	10.5 stitches/in (4.13 stitches/cm)
Standard Size	24" x 24" approx. (60.96cm x 60.96cm)
Standard Adhesive	Commercialon Premium Modular and LVT Adhesive
Optional Adhesive	TileTabs
Standard Warranties	Nexus Modular Commercialon Adhesive for Modular Carpet & LVT Nexus FC Cushion Encore SD Ultima Fiber
Optional Warranties	Commercialon High Moisture Adhesive for Modular Carpet and LVT Advance Modular Backing Tile Tabs Encore® 100 Fiber

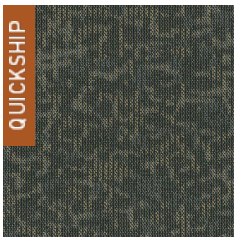
Special Technologies

ProSept® Antimicrobial	Optional
ProTex® Soil Release	Standard
Sentir® Odor-Blocker	Optional

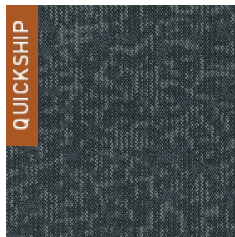
Environmental Specifications & Tests

NSF 140:	Gold Certified
Total Recycled Content	48.75%
Radiant Panel	Class 1
Smoke Density	Less than 450 flaming (ASTM E 662)
Static Test	Less than 3 kv (AATCC-134)
ADA Compliance	Compliant For Accessible Routes
Pill Test	Yes
Lightfastness	Yes

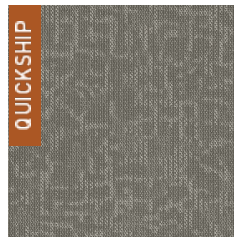
Colorways



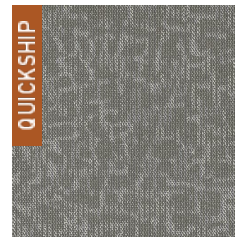
FRS47 Foliage



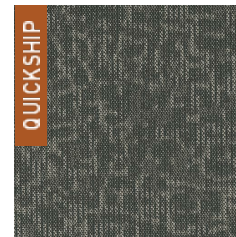
FRS49 Bice



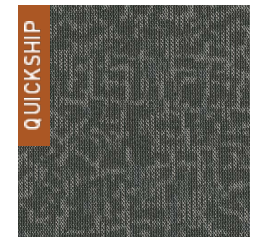
FRS55 Riverstone



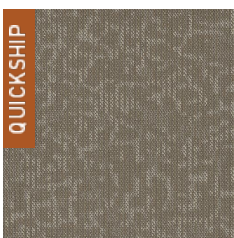
FRS56 Moleskin



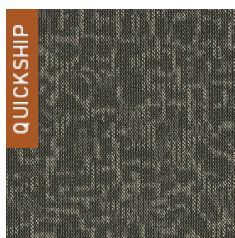
FRS58 Sloe



FRS59 Blackstone



FRS73 Adobe



FRS77 Wren