



Installation Methods: Brick, Ashlar, Quarter Turn

Product Specifications

Construction	Patterned Scroll
Backing	Nexus® Modular
Dye Method	Solution Dyed
Fiber Type	Encore® SD Ultima® (with recycled content)
Face Weight	15 oz./sy (509 grams/m2)
Pile Density	9643 oz./y3 (357.57 kg/m3)
Pattern Repeat	N/A
Gauge	1/12 (4.72 rows/cm)
Stitches Per Inch	10.33 stitches/in (4.07 stitches/cm)
Standard Size	24" x 24" approx. (60.96cm x 60.96cm)
Standard Adhesive	Commercialon Premium Modular and LVT Adhesive
Optional Adhesive	TileTabs
Standard Warranties	Nexus Modular Commercialon Adhesive for Modular Carpet & LVT Nexus FC Cushion Encore SD Ultima Fiber
Optional Warranties	Commercialon High Moisture Adhesive for Modular Carpet and LVT Advance Modular Backing Tile Tabs Encore® 100 Fiber

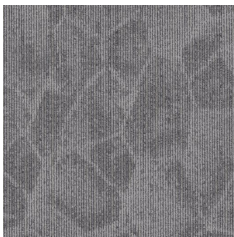
Special Technologies

ProSept® Antimicrobial	Optional
ProTex® Soil Release	Standard
Sentir® Odor-Blocker	Optional

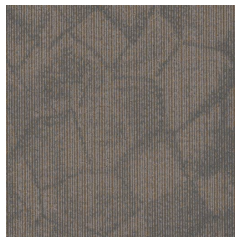
Environmental Specifications & Tests

NSF 140:	Gold Certified
Total Recycled Content	46.5%
Radiant Panel	Class 1
Smoke Density	Less than 450 flaming (ASTM E 662)
Static Test	Less than 3 kv (AATCC-134)
ADA Compliance	Compliant For Accessible Routes
Pill Test	Yes
Lightfastness	Yes

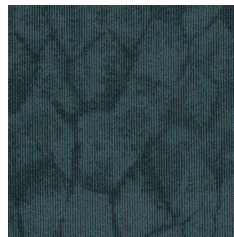
Colorways



FRG11 Ice Chip



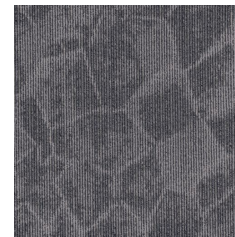
FRG24 Gold Flake



FRG38 Teal Shard



FRG47 Blue Tinge



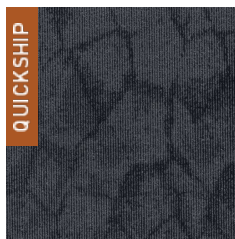
FRG51 Cracked Con..



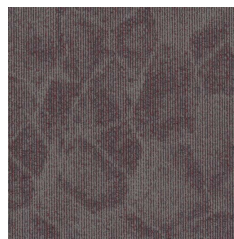
FRG52 Cinder



FRG54 Grey Wedge



FRG59 Charcoal Bit



FRG84 Red Trace