



**Installation Methods:** Parquet, Herringbone, Basketweave, Monolithic, Ashlar

Product Specifications

Construction	Patterned Scroll
Backing	Nexus® Modular
Dye Method	Solution / Yarn Dyed
Fiber Type	Encore® BCF (with recycled content)
Face Weight	22 oz./sqy (746 grams/m2)
Pile Density	7472 oz./y3 (277.07 kg/m3)
Pattern Repeat	N/A
Gauge	1/12 (4.72 rows/cm)
Stitches Per Inch	12 stitches/in (4.72 stitches/cm)
Standard Size	18" x 36" approx. (45.72cm x 91.44cm)
Standard Adhesive	Commercialon Premium Modular and LVT Adhesive
Optional Adhesive	TileTabs
Standard Warranties	Nexus Modular Commercialon Adhesive for Modular Carpet & LVT Encore BCF (with ColorLoc Plus) Nexus FC Cushion
Optional Warranties	Commercialon High Moisture Adhesive for Modular Carpet and LVT Tile Tabs Encore® 100 Fiber

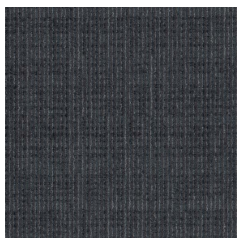
Special Technologies

ProSept® Antimicrobial	Optional
ProTex® Soil Release	Standard
Sentir® Odor-Blocker	Optional

Environmental Specifications & Tests

NSF 140:	Gold Certified
Total Recycled Content	45.95%
Radiant Panel	Class 1
Smoke Density	Less than 450 flaming (ASTM E 662)
Static Test	Less than 3 kv (AATCC-134)
ADA Compliance	Compliant For Accessible Routes
Pill Test	Yes
Lightfastness	Yes

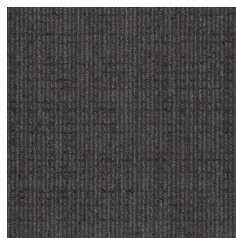
Colorways



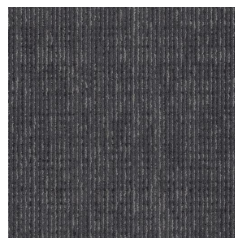
ELN36 Patina



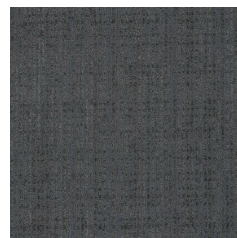
ELN45 Milori Blue



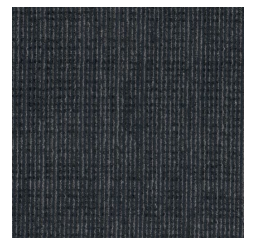
ELN52 Shadow



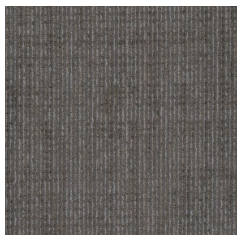
ELN54 Sparrow



ELN56 Anthracite



ELN58 Iron Grey



ELN73 Blonde