



Installation Methods: Parquet, Herringbone, Basketweave, Ashlar

Product Specifications

Construction	Tip-Sheared Scroll
Backing	Nexus® Modular
Dye Method	Solution Dyed
Fiber Type	Encore® SD Ultima® (with recycled content)
Face Weight	22 oz./sy (746 grams/m2)
Pattern Repeat	N/A
Gauge	1/12 (4.72 rows/cm)
Stitches Per Inch	10.83 stitches/in (4.26 stitches/cm)
Standard Size	12" x 48" approx. (30.48cm x 121.92cm)
Standard Adhesive	Commercialon Premium Modular and LVT Adhesive
Standard Warranties	Nexus Modular Commercialon Adhesive for Modular Carpet & LVT Nexus FC Cushion Encore SD Ultima Fiber
Optional Warranties	Advance Modular Backing Nexus Cushion Modular Adhesive Advance Modular Adhesive Encore® 100 Fiber

Special Technologies

ProSept® Antimicrobial	Optional
ProTex® Soil Release	Standard
Sentir® Odor-Blocker	Optional

Environmental Specifications & Tests

NSF 140:	Gold Certified
Total Recycled Content	44.8%
Radiant Panel	Class 1
Smoke Density	Less than 450 flaming (ASTM E 662)
Static Test	Less than 3 kv (AATCC-134)
ADA Compliance	Compliant For Accessible Routes
Pill Test	Yes
Lightfastness	Yes

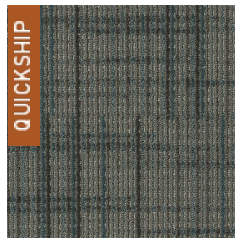
Colorways



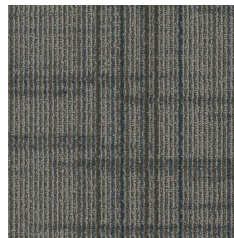
CSS10 Tatami



CSS32 Tinsel



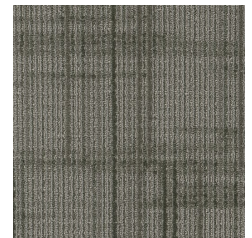
CSS45 Shadow



CSS47 Barkcloth



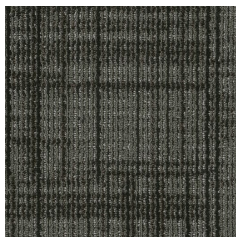
CSS48 Denim



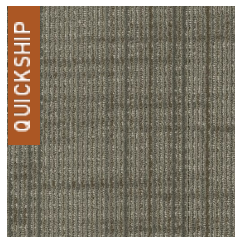
CSS52 Grey Twill



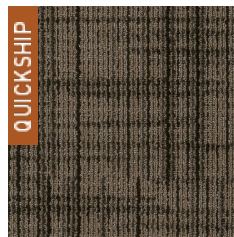
CSS55 Stonewash



CSS58 Rattan



CSS72 Knitting Nee...



CSS76 Corduroy



CSS77 Tapestry Ta...



CSS86 Shuttle Bro...