



Product Specifications

| | |
|----------------------------|-------------------------------|
| Construction | Textile Composite |
| Backing | Polyester Felt Cushion |
| Dye Method | Solution Dyed |
| Wear Layer | Polyester - applied pattern |
| Pattern Repeat | N/A |
| Total Weight | 4.5 oz - 5.2 oz/ square foot |
| Total Thickness | .205 inches |
| Dimensions: | 24" x 24" modules |
| Standard Adhesive | Kinetex Adhesive |
| Packaging | 18 modules per box (72 sq.ft) |
| Standard Warranties | Kinetex Adhesive |

Special Technologies

| | |
|------------------------|----------|
| Kinetex ProTex® | Standard |
|------------------------|----------|

Environmental Specifications & Tests

| | |
|--------------------------------|------------------------------------|
| Carbon Footprint: | Carbon Neutral |
| Recyclability: | 100% Closed-loop Recyclable |
| NSF 140: | Platinum Certified |
| Total Recycled Content: | 45% |
| Radiant Panel | Class 1 |
| Smoke Density | Less than 450 flaming (ASTM E 662) |
| Static Test | Less than 3 kv (AATCC-134) |
| ADA Compliance | Compliant For Accessible Routes |
| Pill Test | Yes |
| Lightfastness | Yes |

Installation Methods: Brick, Ashlar, Quarter Turn

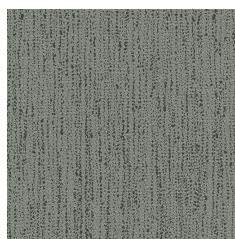
Colorways



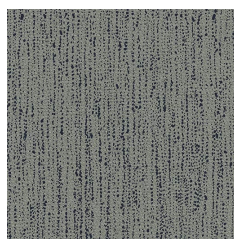
CSC24 Splash



CSC37 Stream



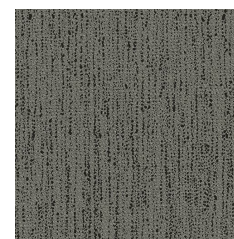
CSC44 Rill



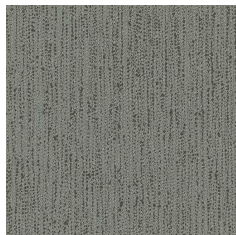
CSC48 Shower



CSC49 Spill



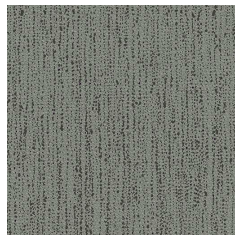
CSC59 Rapids



CSC74 Rainfall



CSC77 Rush



CSC99 Cataract