



Installation Methods: Parquet, Herringbone, Basketweave, Brick, Ashlar

Product Specifications

Construction	Textured Loop
Backing	Nexus® Modular
Dye Method	Solution Dyed
Fiber Type	Encore® SD Ultima® (with recycled content)
Face Weight	20 oz./sy (678 grams/m2)
Pile Density	7579 oz./y3 (281.03 kg/m3)
Pattern Repeat	N/A
Gauge	1/10 (3.94 rows/cm)
Stitches Per Inch	10 stitches/in (3.94 stitches/cm)
Standard Size	18" x 36" approx. (45.72cm x 91.44cm)
Standard Adhesive	Commercialon Premium Modular and LVT Adhesive
Optional Adhesive	TileTabs
Standard Warranties	Nexus Modular Commercialon Adhesive for Modular Carpet & LVT Nexus FC Cushion Encore SD Ultima Fiber
Optional Warranties	Commercialon High Moisture Adhesive for Modular Carpet and LVT Advance Modular Backing Tile Tabs Encore® 100 Fiber

Special Technologies

ProSept® Antimicrobial	Optional
ProTex® Soil Release	Standard
Sentir® Odor-Blocker	Optional

Environmental Specifications & Tests

NSF 140:	Gold Certified
Total Recycled Content	45.3%
Radiant Panel	Class 1
Smoke Density	Less than 450 flaming (ASTM E 662)
Static Test	Less than 3 kv (AATCC-134)
ADA Compliance	Compliant For Accessible Routes
Pill Test	Yes
Lightfastness	Yes

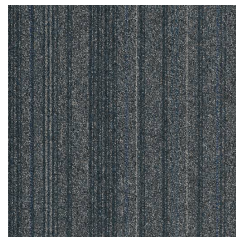
Colorways



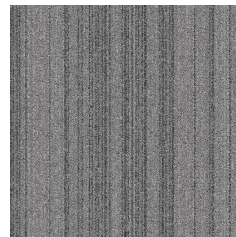
ALL11 Sand



ALL14 Saffron



ALL45 Denim



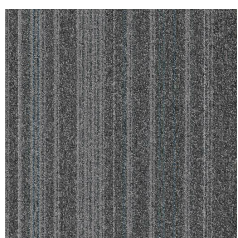
ALL51 Grey Tone



ALL52 Mandarin



ALL53 Fawn



ALL54 Aniline



ALL56 Verdant



ALL58 Blackened



ALL76 Taupe