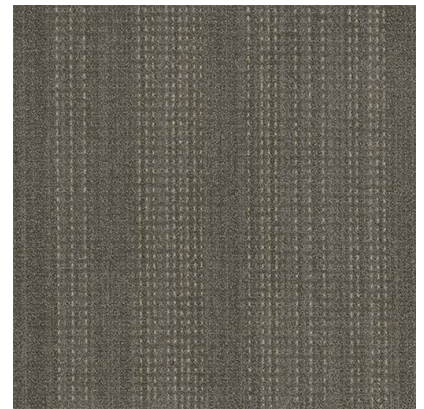


## Immerse | TIMM on Nexus® Cushion

|                     |                         |
|---------------------|-------------------------|
| Manufacturer/Brand  | EF Contract             |
| MasterFormat Number | 09 68 13 Tile Carpeting |

### Product Attributes

|                                |  |
|--------------------------------|--|
| Pre-consumer Recycled Content  | <b>11.9%</b>                                 |
| Post-consumer Recycled Content | <b>4%</b>                                    |
| Total Recycled Content         | <b>15.9%</b>                                 |
| End of Life                    | <a href="#">Flooring Reclamation Program</a> |
| PFAS Free                      | <b>Yes</b>                                   |
| PVC Free                       | <b>Yes</b>                                   |



### Certifications & Documentation

|  |  |
|--|--|
| CDPH v1.1-2010 Compliant   | <b>Yes</b>   |
| • Low-Emitting Materials   | <a href="#">CRI Green Label Plus GLP7878</a>       |
| NSF 140 Sustainability Standard                                      | <b>Gold</b>  |
| Environmental Product Declaration                                    | <a href="#">Nexus Cushion EPD</a>                  |
| Health Product Declaration   | <a href="#">Nexus Cushion HPD</a>                  |
| Declare Label (Red List Free)  | <a href="#">Nexus Cushion - Declare Label</a>      |
| LEED   | <a href="#">Nexus Cushion LEED Credit Analysis</a> |
| Annual Sustainability Report   | <a href="#">2023 Sustainability Report</a>         |
| Our J & J Drive manufacturing facility is ISO 14001 :2015 certified. |  |