

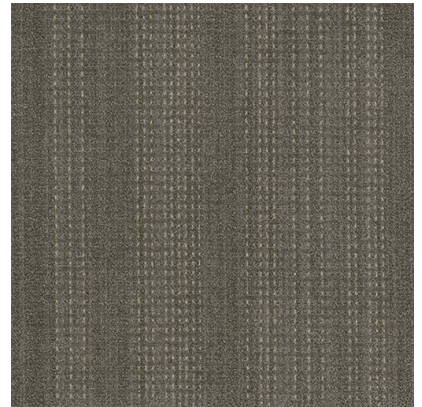
## Immerse | IMM on iLoc®

Manufacturer/Brand	EF Contract
MasterFormat Number	09 68 16 Sheet Carpeting

---

### Product Attributes

Pre-consumer Recycled Content	<b>25%</b>
Post-consumer Recycled Content	<b>0%</b>
Total Recycled Content	<b>25%</b>
End of Life	<a href="#">Flooring Reclamation Program</a>
PFAS Free	<b>Yes</b>
PVC Free	<b>Yes</b>



---

### Certifications & Documentation

CDPH v1.1-2010 Compliant	<b>Yes</b>
• Low-Emitting Materials	<a href="#">CRI Green Label Plus GLP5055</a>
Annual Sustainability Report	<a href="#">2023 Sustainability Report</a>
Our J & J Drive manufacturing facility is ISO 14001 :2015 certified.	