

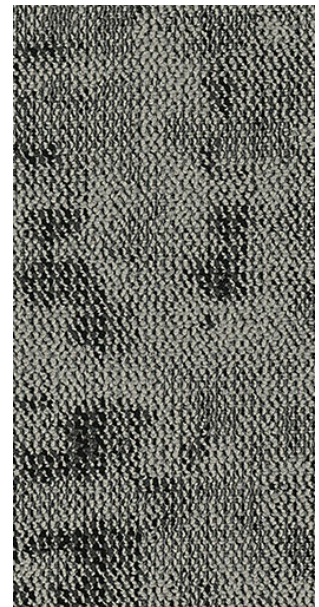
## First Class | TFCS on Advance Modular

Manufacturer/Brand	EF Contract
MasterFormat Number	09 68 13 Tile Carpeting

---

### Product Attributes

Pre-consumer Recycled Content	<b>56.5%</b>
Post-consumer Recycled Content	<b>0%</b>
Total Recycled Content	<b>56.5%</b>
End of Life	<a href="#">Flooring Reclamation Program</a>
PFAS Free	<b>Yes</b>
PVC Free	<b>Yes</b>



---

### Certifications & Documentation

NSF 140 Sustainability Standard	<a href="#">Gold</a>
Environmental Product Declaration	<a href="#">Advance Modular EPD</a>
Health Product Declaration	<a href="#">Advance Modular HPD</a>
Declare Label (Red List Free)	<a href="#">Advance Modular - Declare Label</a>
LEED	<a href="#">Advance Modular LEED Credit Analysis</a>
Annual Sustainability Report	<a href="#">2023 Sustainability Report</a>
Our J & J Drive manufacturing facility is ISO 14001 :2015 certified.	