

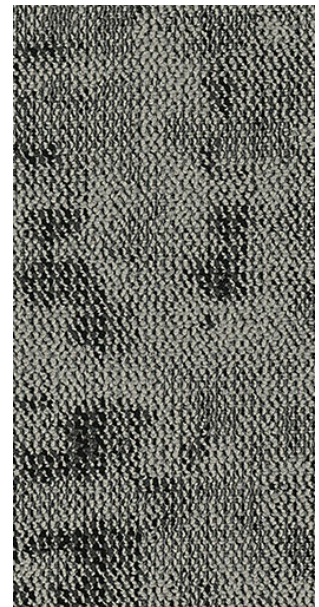
## First Class | TFCS on Nexus® Modular

Manufacturer/Brand	EF Contract
MasterFormat Number	09 68 13 Tile Carpeting

---

### Product Attributes

Pre-consumer Recycled Content	<b>46.2%</b>
Post-consumer Recycled Content	<b>0%</b>
Total Recycled Content	<b>46.2%</b>
End of Life	<a href="#">Flooring Reclamation Program</a>
PFAS Free	<b>Yes</b>



---

### Certifications & Documentation

CDPH v1.1-2010 Compliant	<b>Yes</b>
• Low-Emitting Materials	<a href="#">CRI Green Label Plus GLP9716</a>
NSF 140 Sustainability Standard	<b>Gold</b>
Environmental Product Declaration	<a href="#">Nexus® EPD</a>
Health Product Declaration	<a href="#">Nexus HPD</a>
LEED	<a href="#">Nexus LEED Credit Analysis</a>
Annual Sustainability Report	<a href="#">2023 Sustainability Report</a>
Our J & J Drive manufacturing facility is ISO 14001 :2015 certified.	