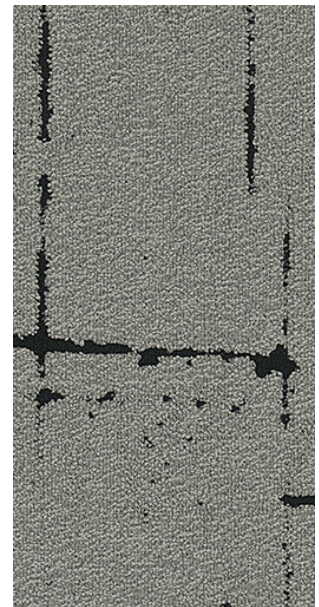


Designer's Choice | TDRC on Nexus® Modular

| | |
|---------------------|-------------------------|
| Manufacturer/Brand | EF Contract |
| MasterFormat Number | 09 68 13 Tile Carpeting |

Product Attributes

| | |
|--------------------------------|--|
| Pre-consumer Recycled Content | 44.4% |
| Post-consumer Recycled Content | 0% |
| Total Recycled Content | 44.4% |
| End of Life | Flooring Reclamation Program |
| PFAS Free | Yes |



Certifications & Documentation

| | |
|--|--|
| CDPH v1.1-2010 Compliant | Yes |
| • Low-Emitting Materials | CRI Green Label Plus GLP9716 |
| NSF 140 Sustainability Standard | Gold |
| Environmental Product Declaration | Nexus® EPD |
| Health Product Declaration | Nexus HPD |
| LEED | Nexus LEED Credit Analysis |
| Annual Sustainability Report | 2023 Sustainability Report |
| Our J & J Drive manufacturing facility is ISO 14001 :2015 certified. | |